

MOUNTING HEIGHT OF DEVICES AND CABINETS	
-GENERAL RECEPTACLES WALL MOUNTED = 200mm AFFL	
-WHERE BENCHES ARE PROVIDED SOCKET WALL MOUNTED = 800mm AFFL	
-WHERE BENCHES ARE PROVIDED TELEPHONE & DATA WALL MOUNTED = 300mm AFFL	
-TELEPHONE & DATA WALL MOUNTED = 300mm AFFL	
-GENERAL LIGHTING SWITCHES= 1000mm AFFL	
-FIRE ALARM MANUAL CALL STATION = 1000mm AFFL	
-FIRE ALARM BELL = 200mm AFFL	
-WALL MOUNTED ELECTRICAL PANEL BOARD = 1400mm FROM BOTTOM TO FFL	
-LOW CURRENT WALL MOUNTED CABINETS AND PANELS = 1400mm FROM BOTTOM TO FFL	

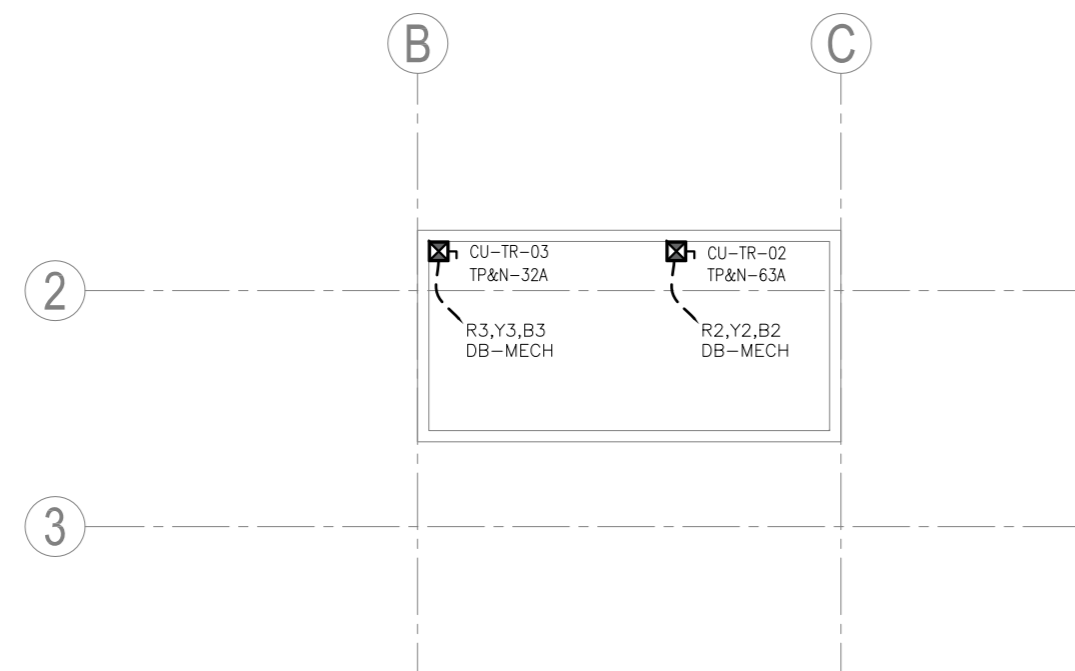
KEYPLAN:

NOTES:

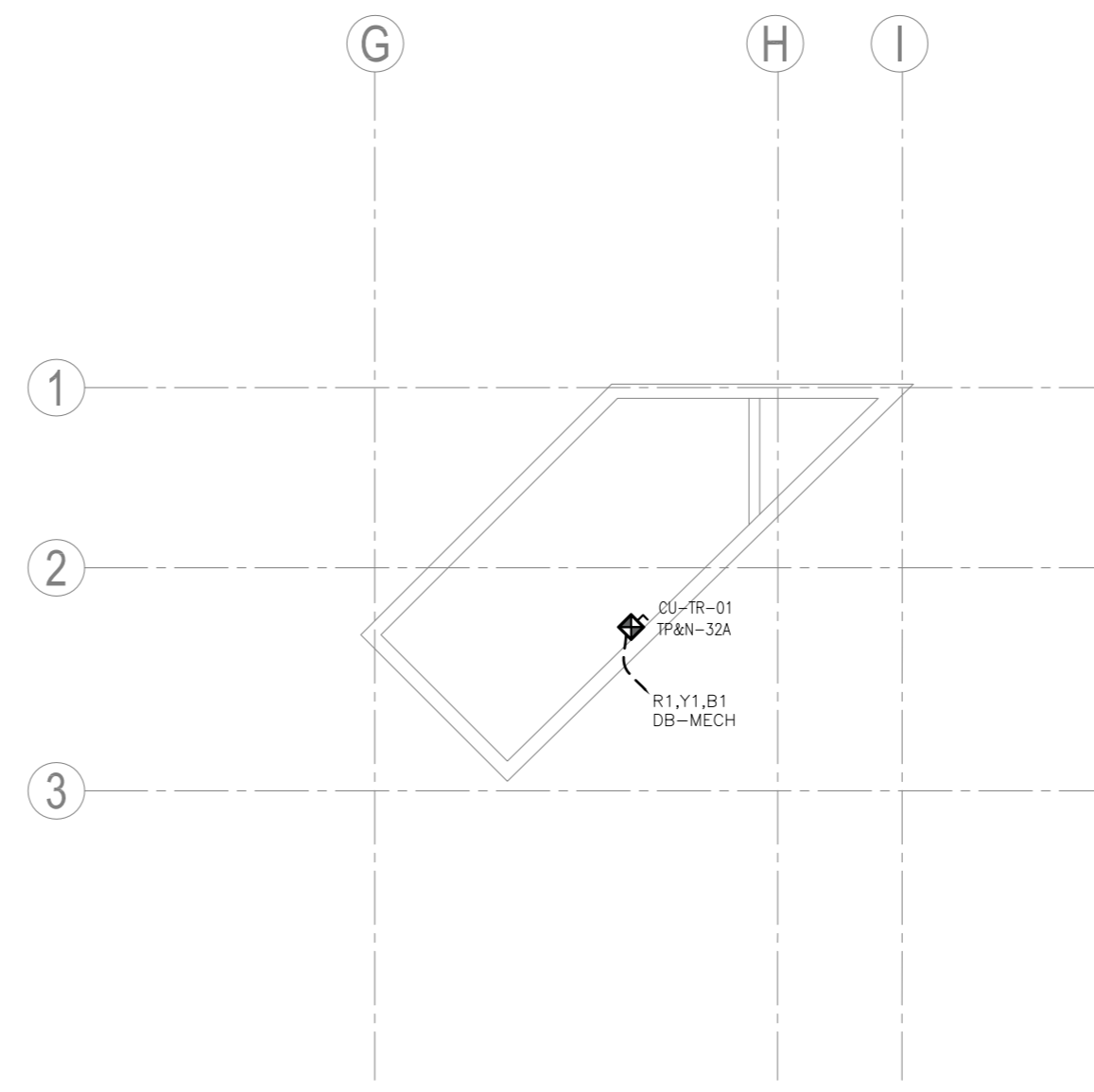
- 1- GENERATORS & ITS SYNCHRO PANELS, & FUEL TANKS AND UPS & ITS ATS SYSTEMS ARE INSTALLED BY SEPARATE AWARDED SUPPLIERS. CONTRACTOR SHALL COORDINATE AND PROVIDE THESE SUPPLIERS THE NECESSARY CABLING LENGTHS & SIZES AS SPECIFIED IN THIS TENDER.
- 2- IT IS THE CONTRACTOR RESPONSIBILITY TO SUBMIT LOAD CALCULATIONS AND VERIFY IT WITH THE UPS LOADS AND COORDINATE WITH THE SEPARATE AWARDED SUPPLIER THE INSTALLATION OF UPS SYSTEMS IN THE NEW ELECTRICAL ROOM ON ROOF TO THE SATISFACTION AND APPROVAL OF THE ENGINEER.
- 3- EXACT LOCATION OF ELECTRICAL COMPONENTS (SOCKET, SWITCHES,...) SHALL BE COORDINATED ON SITE.

LEGEND:

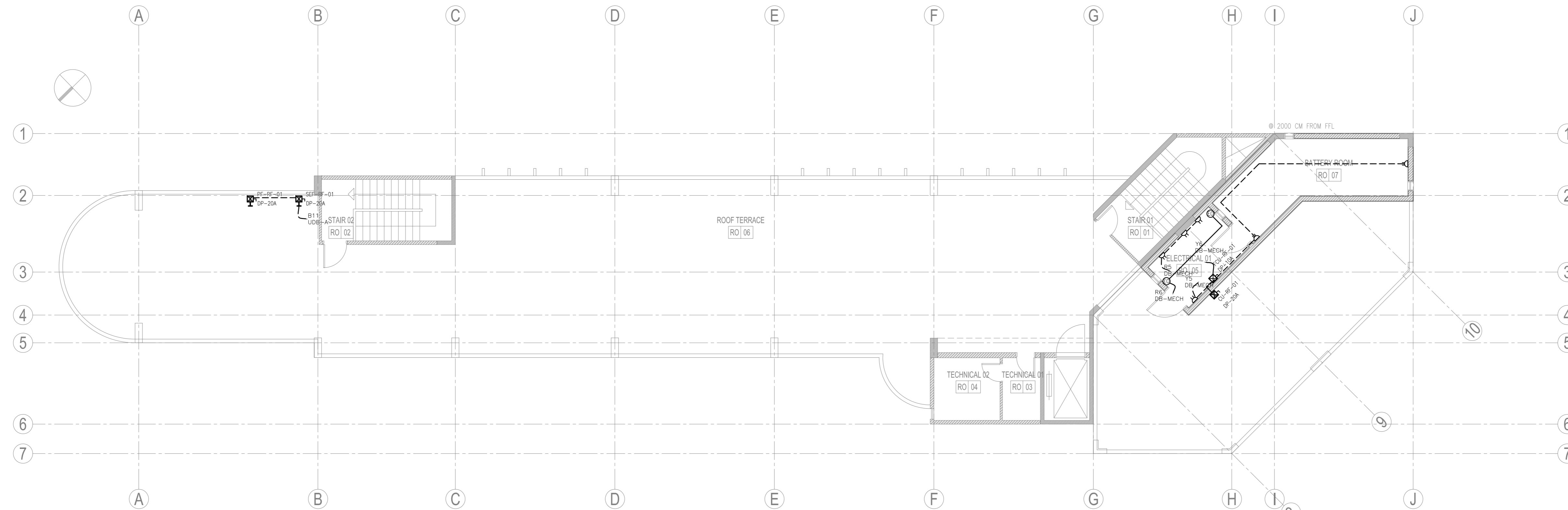
	WALL MOUNTED SIMPLEX SOCKET OUTLET
	WALL MOUNTED DUPLEX SOCKET OUTLET
	FLOOR MOUNTED DUPLEX SOCKET OUTLET
	20A WALL MOUNTED POWER SOCKET OUTLET
	WALL MOUNTED SIMPLEX UPS SOCKET OUTLET
	WALL MOUNTED DUPLEX UPS SOCKET OUTLET
	FLOOR MOUNTED DUPLEX UPS SOCKET OUTLET
	SURFACE MOUNTED DISTRIBUTION BOARD
	SURFACE MOUNTED UPS DISTRIBUTION BOARD
	DISCONNECT SWITCH, IP54, ROBUST THERMOPLASTIC ENCLOSURE, RATED IN AC23, RATING AND POLES NUMBERS TO BE AS MENTIONED ON THE DRAWINGS
	WATERPROOF DISCONNECT SWITCH, IP64, ALUMINIUM ALLOY ENCLOSURE, RATED IN AC23, RATING AND POLES NUMBERS TO BE AS MENTIONED ON THE DRAWINGS
	WATERPROOF DISCONNECT SWITCH, IP64, ALUMINIUM ALLOY ENCLOSURE, RATED IN AC23, RATING AND POLES NUMBERS TO BE AS MENTIONED ON THE DRAWINGS. THE DISCONNECT SHALL BE FIXED ON GALVANIZED METALLIC STAND
	ELECTRICAL OUTLET



1 TOP OF ROOF - PART PLAN



2 TOP OF ROOF - PART PLAN



3 ROOF FLOOR PLAN

PROJECT TITLE
LRC BTS ANTELIAS
ANTELIAS - LEBANON

OWNER
 LEBANESE RED CROSS

LRC CONSULTANT
PROF. SAID BITAR
Architecte Urbaniste

LEAD DESIGNER
 INTERNATIONAL CONSULTING BUREAU
International Consulting Bureau s.a.l
Address: Tower, 4th floor, Justinian st.
Clémenceau, Beirut - Lebanon
Tel : 01 347 597 Fax: 01 736 233

DRAWING TITLE
POWER
GENERAL PLAN
ROOF PLAN

DRAWING NUMBER
BTS AN - E - 240 - RF - 00

SCALE : 1/50
DATE : October 2021
DISCIPLINE : ELECTRICAL
PHASE : TENDER